

Biological Spill Guidance

Version 1. 02/20/2024

SPILL CONSIDERTIONS:

Appropriate biological spill responses will vary depending upon the nature of the spill. Primary considerations include:

- **Location** (e.g., biosafety cabinet, countertop, floor, equipment);
- **Nature** (e.g., tip-over, broken glass, small/large size);
- **Infectivity/toxicity** of the spilled material;
- **Volatility and viscosity** of the spilled material;
- **Nature of affected surfaces** (e.g., absorbent, porous or smooth-pitted);
- **Additional challenges** (e.g. broken glass/sharps, personnel exposure, other chemical/radiological/physical hazards);
- **Susceptibility** to disinfection/remediation.

BIOLOGICAL SPILL KIT:

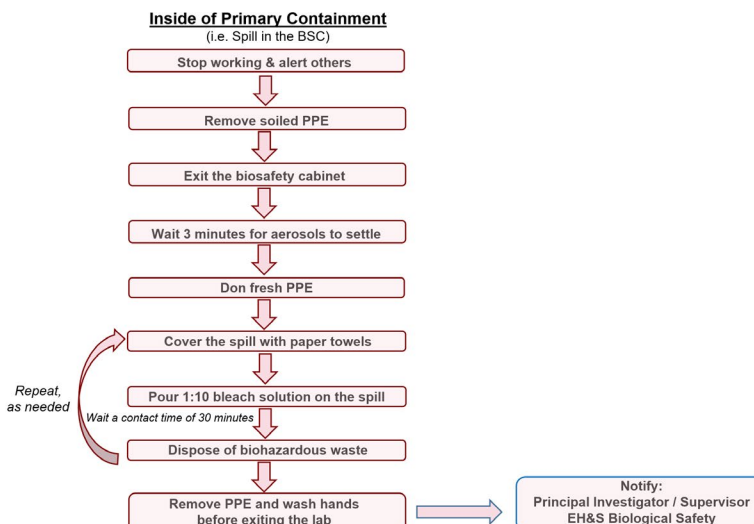
All laboratories in which biohazardous materials or recombinant/synthetic nucleic acids are handled should be equipped with a biological spill kit. The biological spill kit minimally includes:

- Undiluted bleach (replaced yearly)
- Absorbent paper towels
- Biohazardous waste bags
- Disposable gloves
- Eye/face protection
- Broom, scoop and sharps box (if applicable)

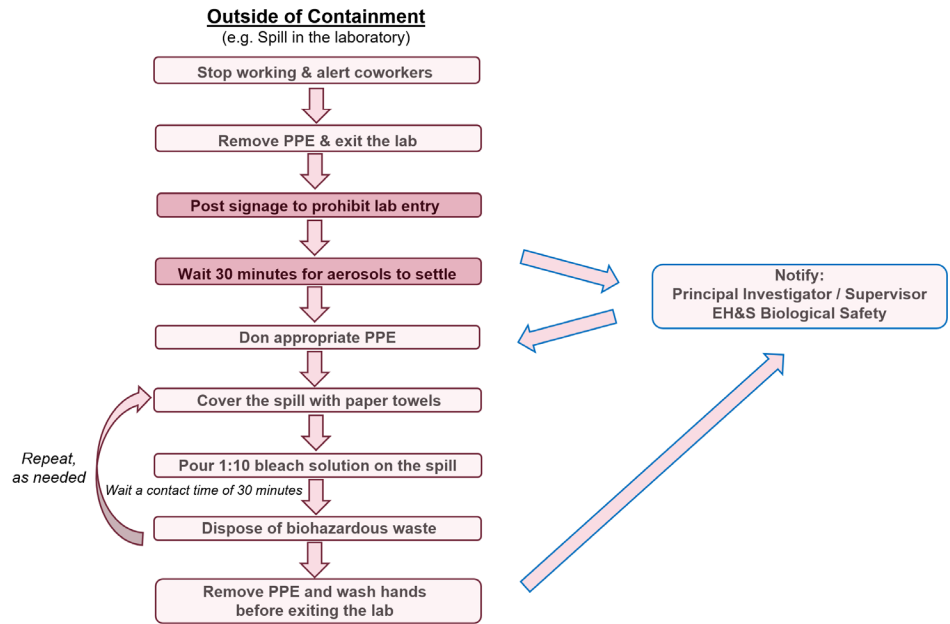
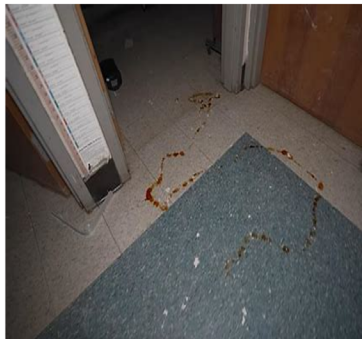


BIOLOGICAL SPILL RESPONSES:

I. Spills in Primary Containment (i.e. spill in the biosafety cabinet)



II. Spills Outside of Primary Containment (i.e. spills in the laboratory)



III. Spills in the Centrifuge

